

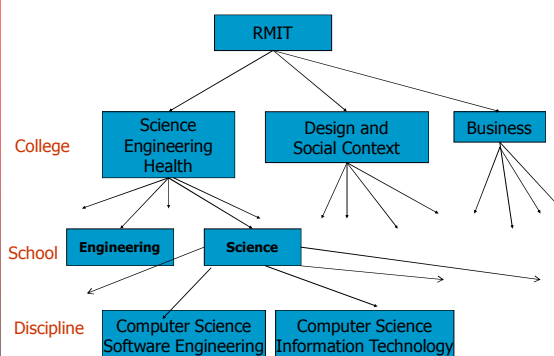
# Bachelor of Software Engineering

Vic Ciesielski  
Program Manager  
Office: 14.08.16  
9925 2926  
[vic.ciesielski@rmit.edu.au](mailto:vic.ciesielski@rmit.edu.au)  
Email for an appointment



# SUMMARY

- Introductions
- Vic <http://goanna.cs.rmit.edu.au/~vc/index.html>
- The SE Program
- RMIT matters
- Questions



# RMIT Terminology

- Program: You are enrolled in the Bachelor of Software Engineering
- Program Code: BP096
- You will be doing 4 courses (subjects)
- Your college is SEH
- Your home school is Science
- Subject = Course

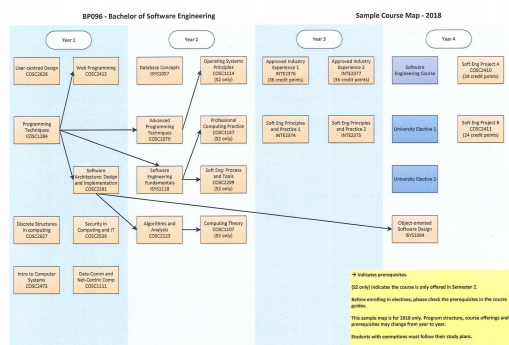


## Programs

- Software Engineering
- Computer Science
- Information Technology
- Computing Studies
  
- Games Programming
- *Courses are shared between programs*

## Program Structure

- Years 1 and 2 are foundation years, 16 compulsory courses
- Year 3 Internship
- Year 4 Project courses and some electives



## The Internship

- We have companies who want interns
  - You need very good marks to get one
- OR you need to find your own company
  - We can help with resume/interview skills
  - Needs to be approved
- ELSE switch to Computer Science

## Academic Administration

- These are for help with administration of everything to do with your (academic) enrolment.
- ⑩ Email: [seh.acadserv.science@rmit.edu.au](mailto:seh.acadserv.science@rmit.edu.au)
- ⑩ Location: Building 10, Level 9, Room 4
- ⑩ Phone: 99252621
- Academic (Computer Science) judgement or advice is through me. You may email for an appointment as needed.

## Timetabling: Preferences, Full?

- ⑩ It's not first come first served.
- ⑩ Students provide a list of preferences, and RMIT does its best to fit you in.
- ⑩ If you have a problem, please go to
- ⑩ <https://tinyurl.com/yd8td7hw>
- ⑩ If it says a tutorial, laboratory or subject is full, please do not panic. Contact Student Academic Administration in B10, L9.

## Support Services. Help and Confidentiality

- ⑩ RMIT Equitable Learning Services (ELS) provides support and equal opportunities for students with a disability, long-term illness and/or mental health condition and primary carers of individuals with a disability.
- ⑩ Some students are reticent to approach ELS because they don't like the stigma of "disability". This isn't productive. RMIT is committed to equality and will assist you to study in a way that takes into account impediment(s) you may have.
- ⑩ Contact: RMIT Connect, Building 10, Level 4

## Course Guides: Part A and Part B

- ⑩ Although Canvas is your learning management system, and each link will be associated with a subject (course) you are studying, the formal learning guide is defined by the Course Guide.
- ⑩ A Course Guide not only describes the outline of the teaching and learning you will experience, it also lists the assessment requirements which will lead to your final grade. There are two components. Part A is more general. Part B gives details which amplify an offering described in Part A. You need to find and read both the Part A and Part B.
- ⑩ Here is an example link  
<https://tinyurl.com/vca2cdid>

## Special Consideration: Use and abuse

- Special Consideration is your friend for those times when life gets in the way of you being able to submit some assessment, for example. There is a quick but formal process, and you need to provide adequate (confidential if need be) evidence in order to secure positive consideration.
- Check this link carefully before applying
- <https://tinyurl.com/ybo26t3c>

13

## Buy a laptop? Considerations

- It's a good investment. You will also gain valuable experience installing complex open source programs.
- Many of the courses will utilise the Unix operating system family (includes Linux). Most of you though will only have seen Windows or MacOSX operating systems, or both.
- Students have probably two options:
  - Ⓞ Get a Windows Laptop and set it up to be dual boot, running Windows 10 and a version of Linux as a dual boot.
  - Ⓞ Get a Mac Laptop and run MacOSX which has Unix already as the underbelly.
- The first choice is probably cheaper and the second is probably smoother. The choice is yours.

14

## Natural Hierarchy

- Ⓞ Canvas Discussion Community
- Ⓞ Head Tutor
- Ⓞ Tutor or Practicals Demonstrator
- Ⓞ Current Lecturer
- Ⓞ Course Coordinator (may be different to lecturer)
- or (for non technical issues)
- Ⓞ the RMIT Learning Centre
- Those who don't attend lectures, tutorials, find assistance and guidance, and do not work steadily each and every week (they rely on cramming!) are more likely to fall into an 'at risk' category. We want to help you never to fall into that category.

15

## Academic Integrity: it doesn't get more serious

- This includes:
  - Ⓞ plagiarism
  - Ⓞ cheating in an exam or assignment
  - Ⓞ copying or submitting whole or parts of computer files as if they are your own.
- Using the correct citation and knowing how to reference your work is one of the most important things you can do to uphold your academic integrity.
- See <https://www.rmit.edu.au/students/student-essentials/rights-and-responsibilities/academic-integrity>

16

## Late News

- Assume your enrolment/STS/admin record will eventually be correct and ATTEND THE CLASSES YOU SHOULD BE ENROLLED FOR
- **DO NOT THINK** "I can't go to a class because I'm not properly enrolled"



Photography: Damian Davila